

Water Warriors Activity Book



**SAVE WATER
WITH DEWEY**

(suggested for ages 6 and up)



Visit our Water Wise Garden at 2855 Mesa Road, 80904 to see beautiful, water wise landscape options.



FREE Ways to Save Water and Energy!

- 💧 **EXCHANGE up to 2 of your showerheads** for a WaterSense® showerhead and save \$85 in water, wastewater and energy costs.
- 💧 Visit our House Efficiency Exhibits, enjoy family-fun water activities and **take home a Dewey squeeze ball.**

All at the
Conservation and Environmental Center,
2855 Mesa Road, 80904,
Monday through Friday, 8am - 5pm.

Water System Fast Facts

Colorado Springs Utilities is proud to bring you some of the best water in the nation!

- Import most water from 100 miles away through 4 major pipelines.
- Store 3 years of water demand in 25 reservoirs.
- Clean water at 6 treatment plants.
- Deliver 45 million gallons a day through 2,123 miles of distribution pipe.
- Plan for future water needs 50 years ahead.

Hidden Picture Puzzle

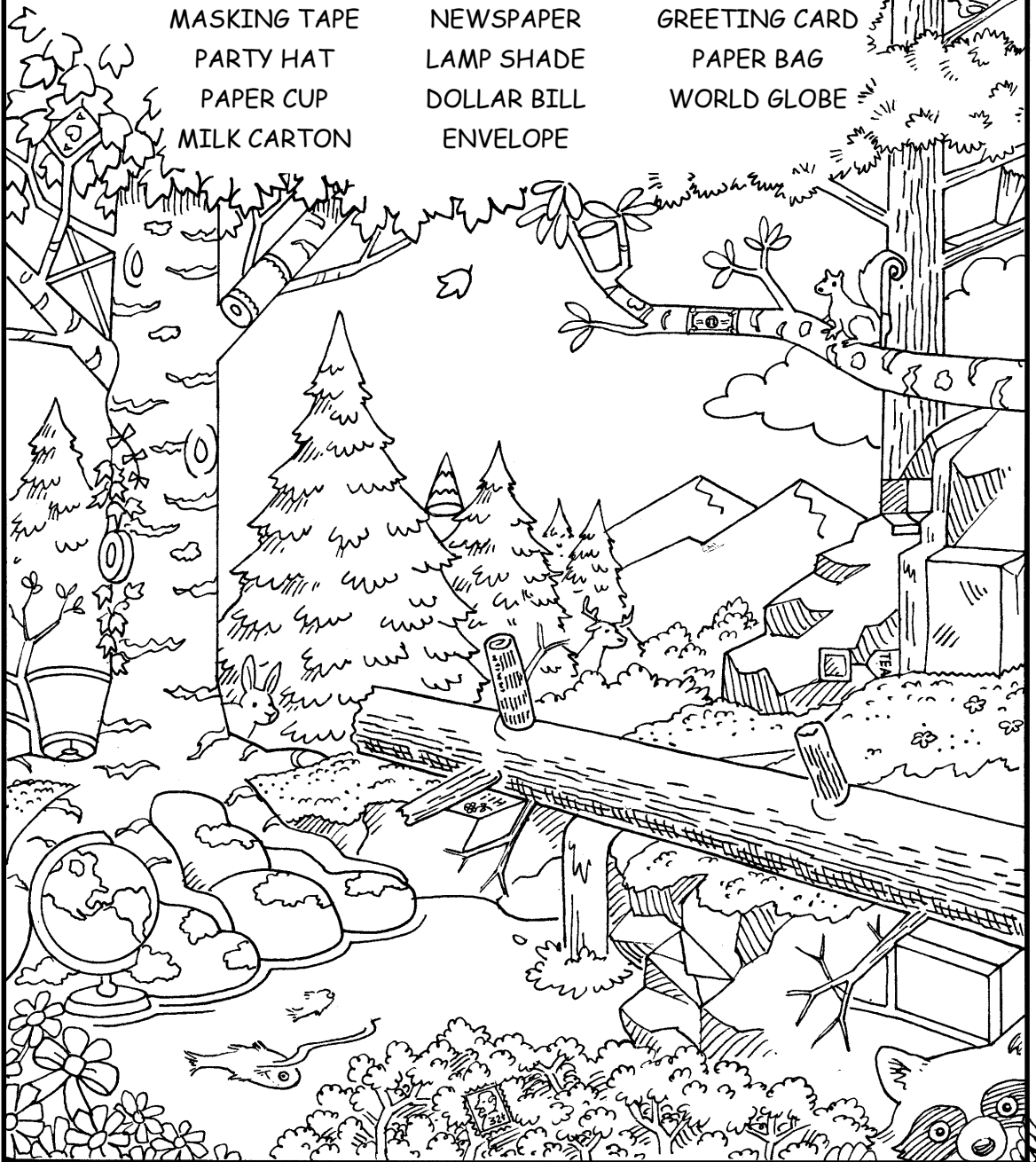
Did you know that one tree can filter up to 60 pounds of pollutants from the air each year? And, each ton of recycled paper can save 17 trees, 4,000 kilowatts of energy and 7,000 gallons of water! Learn important facts like these at your local library.

Can you find these objects hidden in the forest picture below?

Guess what? They are all made out of paper:



- | | | |
|--------------|--------------|---------------|
| KITE | PARTY FAVOR | POSTAGE STAMP |
| BOOK | PLAYING CARD | TEA BAG |
| GIFT BOW | SHOE BOX | PAPER TOWELS |
| MASKING TAPE | NEWSPAPER | GREETING CARD |
| PARTY HAT | LAMP SHADE | PAPER BAG |
| PAPER CUP | DOLLAR BILL | WORLD GLOBE |
| MILK CARTON | ENVELOPE | |



Copyright © TAPPI, 1999

©1996 bryan hendrix

Sponsored by

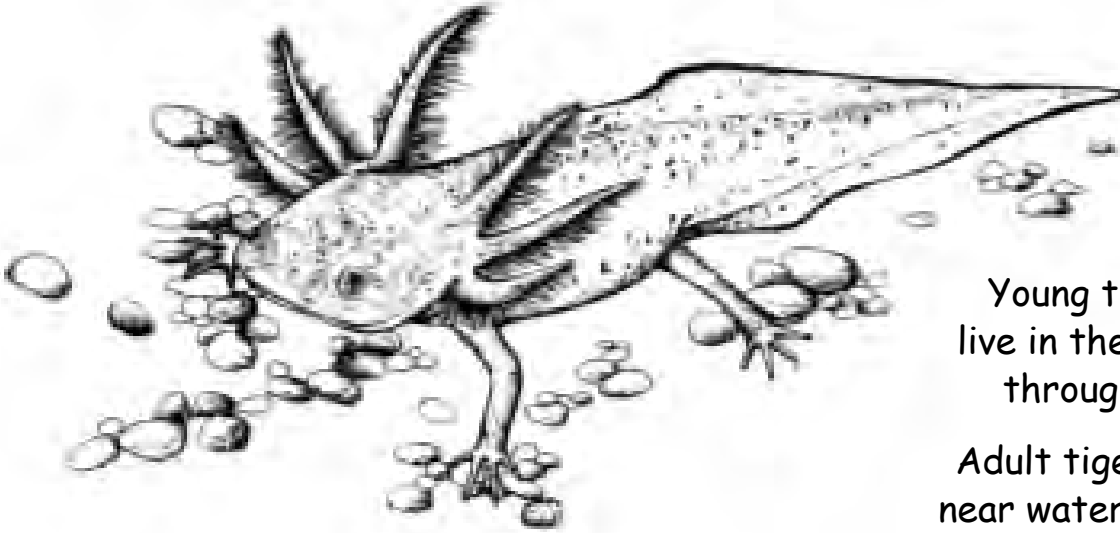


Wildlife Needs Water Too!

TIGER SALAMANDERS - Colorado's State Amphibian

Amphibian means double life.

Tiger salamanders live part of their life in the water and part on land.



Young tiger salamanders live in the water and breath through feathery gills.

Adult tiger salamanders live near water on land and breath through lungs.

Color me!

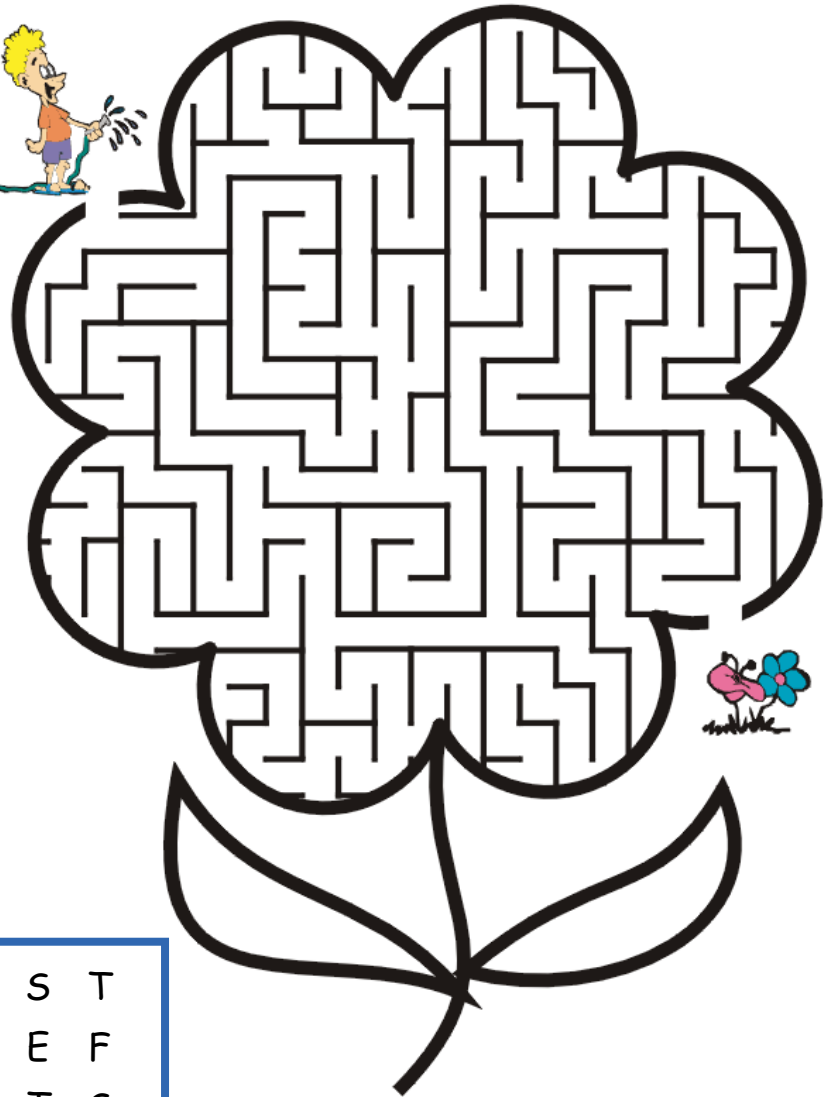


Tiger salamanders are common in Colorado and are found from streams and ponds in the high mountains to rivers and lakes on the eastern plains.

Storm Water



Did you know that when rain and other water flows across grass or pavement it is called storm water? This water eventually ends up in a stream, lake, or other body of water. When you leave trash on the ground it is picked up by the water and carried into our streams and lakes. Make sure you put your trash where it belongs or you may see it again!



W	T	G	U	F	W	S	I	O	N	S	T
L	A	G	H	T	C	N	R	C	C	E	F
M	P	O	R	Z	A	M	A	E	R	T	S
P	E	Z	A	T	C	E	O	A	T	R	N
S	N	A	T	Y	I	L	C	N	E	A	O
D	I	A	E	F	N	J	T	I	A	S	W
X	F	P	H	G	E	A	O	E	E	H	R
F	H	U	N	S	H	E	K	R	I	I	C
W	R	Q	G	A	I	A	E	T	Z	S	N
I	P	D	S	Q	L	N	G	T	S	I	U
F	I	A	E	S	S	M	O	P	A	A	Q
L	I	Y	A	W	E	V	I	R	D	R	O

Find the hidden words!

- DRIVEWAY
- LAKE
- OCEAN
- RAIN
- STREAM
- SNOW
- TRASH
- WATER



Sponsored by



Beavers in Colorado

Beavers are an indicator species which is an animal that helps us determine if a habitat is healthy. Beavers are indicator species for rivers and other aquatic ecosystems. If the water is clean and has lots of delicious plants on the banks, beavers survive but if the water is polluted and there are no plants, beavers have to move on. Next time you visit a river in Colorado, keep an eye out for signs of beavers.

Create a Beaver with your Foot!

Materials: Brown paint, white paint, black marker, paper plate.

How To:

1. Pour some brown paint onto the paper plate.
2. Place your bare foot into the paint; make sure you get all your toes!
3. Place your foot onto the paper to make a good print.
4. Wash your foot and wait for the foot print to dry.
5. The heel of your foot is the head of the beaver! Finger paint paws (all four!) and a tail (down by your big toe!).
6. Use the black marker to draw a face and define the tail.

Your Foot Print Beaver is Complete!

Signs of Beavers

- Beaver tracks
- Webbed and larger back feet
- Chewed trees and shrubs



Don't forget to visit Cheyenne Mountain Zoo's North American Beaver, Ginger! She can be found snuggled up in her den or swimming in her pond across from the domestic goat yard.

Water Warrior Decoder

Decode the words below to learn about Colorado Springs' water.

1 = A	5 = E	9 = I	13 = M	17 = Q	21 = U	25 = Y
2 = B	6 = F	10 = J	14 = N	18 = R	22 = V	26 = Z
3 = C	7 = G	11 = K	15 = O	19 = S	23 = W	
4 = D	8 = H	12 = L	16 = P	20 = T	24 = X	

Drinking water in 3 15 12 15 18 1 4 15

19 16 18 9 14 7 19 comes from 20 8 18 5 5

watersheds: the 3 15 12 15 18 1 4 15

18 9 22 5 18, the 1 18 11 1 14 19 1 19

River, and the 19 15 21 20 8

16 12 1 20 20 5 River.

19 14 15 23 13 5 12 20 is

collected in the 18 15 3 11 25

13 15 21 14 20 1 9 14 19

and 20 18 1 22 5 12 19

up to 100 13 9 12 5 19 in

16 9 16 5 12 9 14 5 19 to get to

20 15 23 14.

Solve this puzzle to find out how far I had to travel to get to your house!



STAY THE TRAIL!

Your local plants and animals thank you for staying on the trail!

FINISH!

You see a moose!

GO FORWARD 3 SPACES!

You remember you packed an extra snack!

GO FORWARD 2 SPACES!

You got lost!

GO BACK 3 SPACES!

You can't make it across the river!

Skip a TURN

GO BACK TO TRAILHEAD

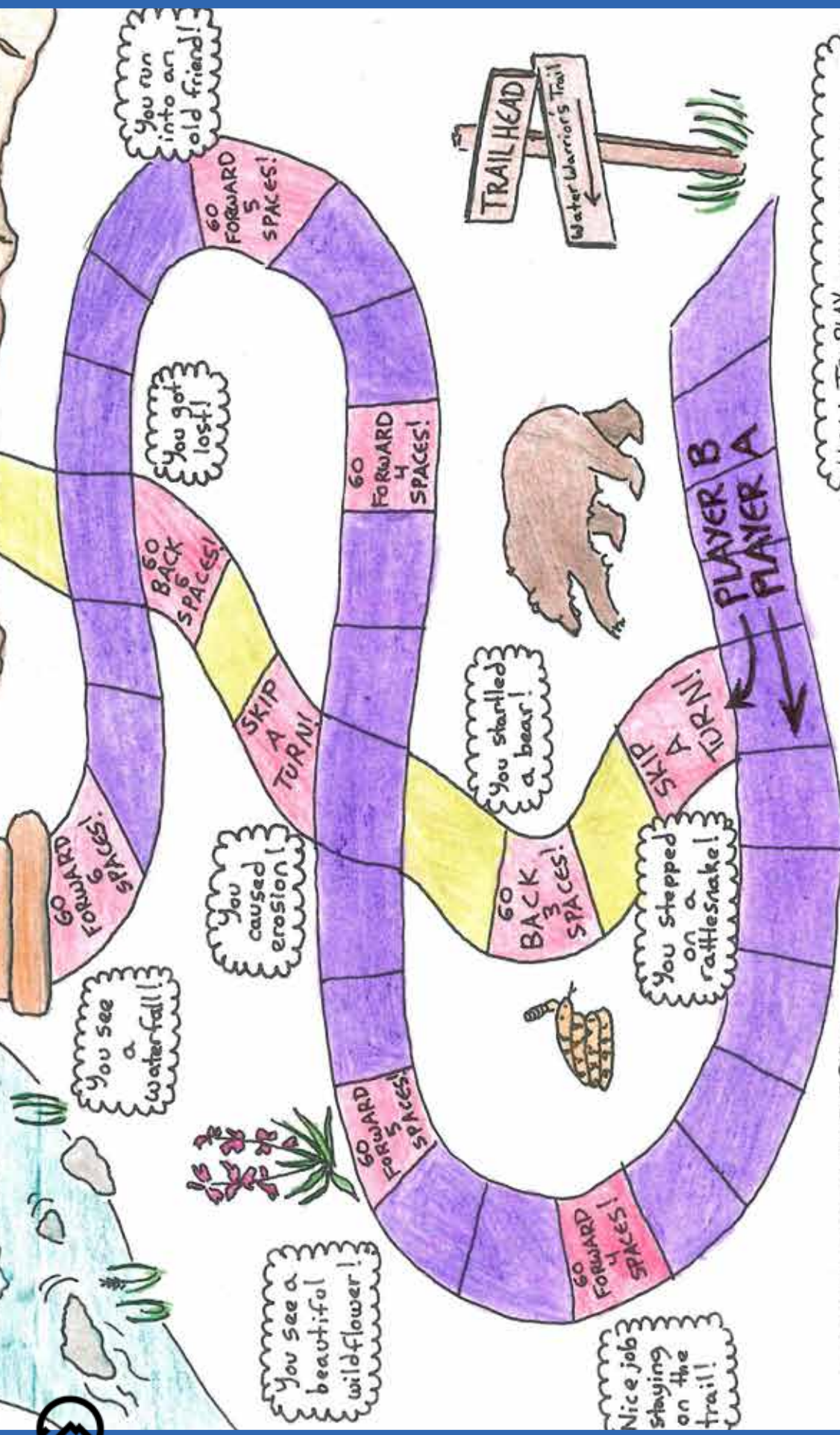
You can use a bridge to cross the river!

You stepped on a rattlesnake!

You caused a landslide!

GO BACK TO TRAILHEAD





HOW TO PLAY - use coins or pieces of paper as gamepieces. Decide who is player A and Player B. Take turns rolling a 6-sided die and follow the instructions on the board. Player A must stay on the trail, and Player B must take the shortcuts. The first player to the top of the mountain wins!

A Water Warrior always stays on the trail, preventing erosion and protecting the environment! Do you have what it takes to be a water warrior?

EROSION - happens when water runs too fast down a mountain, killing the plants and picking up dust and mud. When you go off the trail, you make erosion worse, harming the natural environment!

You run into an old friend!

You got lost!

You caused erosion!

You see a waterfall!



You see a beautiful wildflower!

You startled a bear!



You stepped on a rattlesnake!



Nice job staying on the trail!



PLAYER B
PLAYER A

Sticky Water

Is water sticky? Don't we usually use water to wash our hands to get rid of stickiness? If we could shrink down super, super, super, super small, until we are the size of a water molecule, we could see that water molecules are sticky! This stickiness creates an invisible skin on top of water known as surface tension. This is how bugs can walk on water!



CIRCLE ALL THE BUGS YOU CAN FIND ON THE POND. CAN YOU FIND ALL 10?



Sponsored by



Frozen Water

Frozen water, like snow and ice, can change how the land looks over time. If there is enough snow, and if the land stays cold all year, large snow drifts turn into glaciers.

Glaciers are big sheets of ice and snow that move slowly as they freeze and melt. These large ice sheets carve and change the land beneath them. Thousands of years ago, glaciers were in Colorado! Glaciers shaped how Pikes Peak and the Garden of the Gods look today.



At dawn during the Ice Age, a herd of mammoths find water in a snow-covered meadow, as the glaciers of Pikes Peak glisten in the early sunlight.

Glacier Word Search

G T I O M Z R C A Z W M S
L C H D X O J E E O R M K
A M G A P F U W T O I W C
C P B R K E O N F A Y U O
I C K O U N A D T Y W B R
E R U L S S N K O A Z Z F
R G T O I A S N M O I J B
A W F C L L E C I S X N G
C O L D O V M M Z R Y A M
I F C W X F M V I K R S E
U U F Z E A O F Z D K G L
M A M M O T H S E T P Z T
H E Z E E R F N N X N K F

COLD MELT
COLORADO MOUNTAIN
FREEZE PEAK
GARDEN ROCKS
GLACIER SLOW
ICE SNOW
LANDFORM WATER
MAMMOTHS

Sponsored by



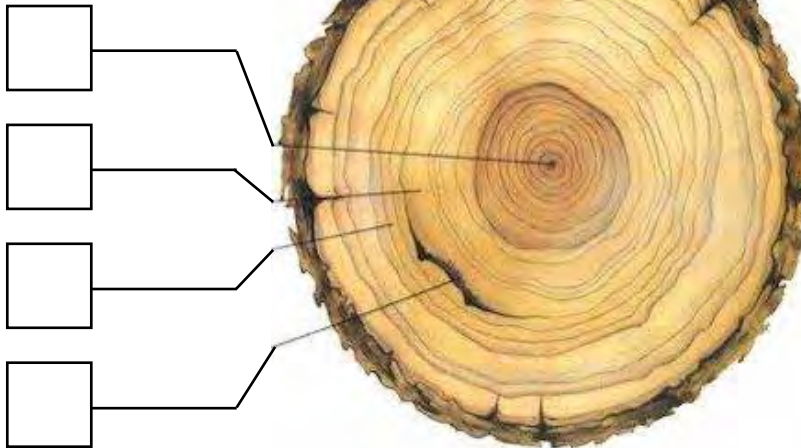
Tree Cookie "Journal"

How old is this tree? _____ Count the rings to find out. Each ring = 1 year

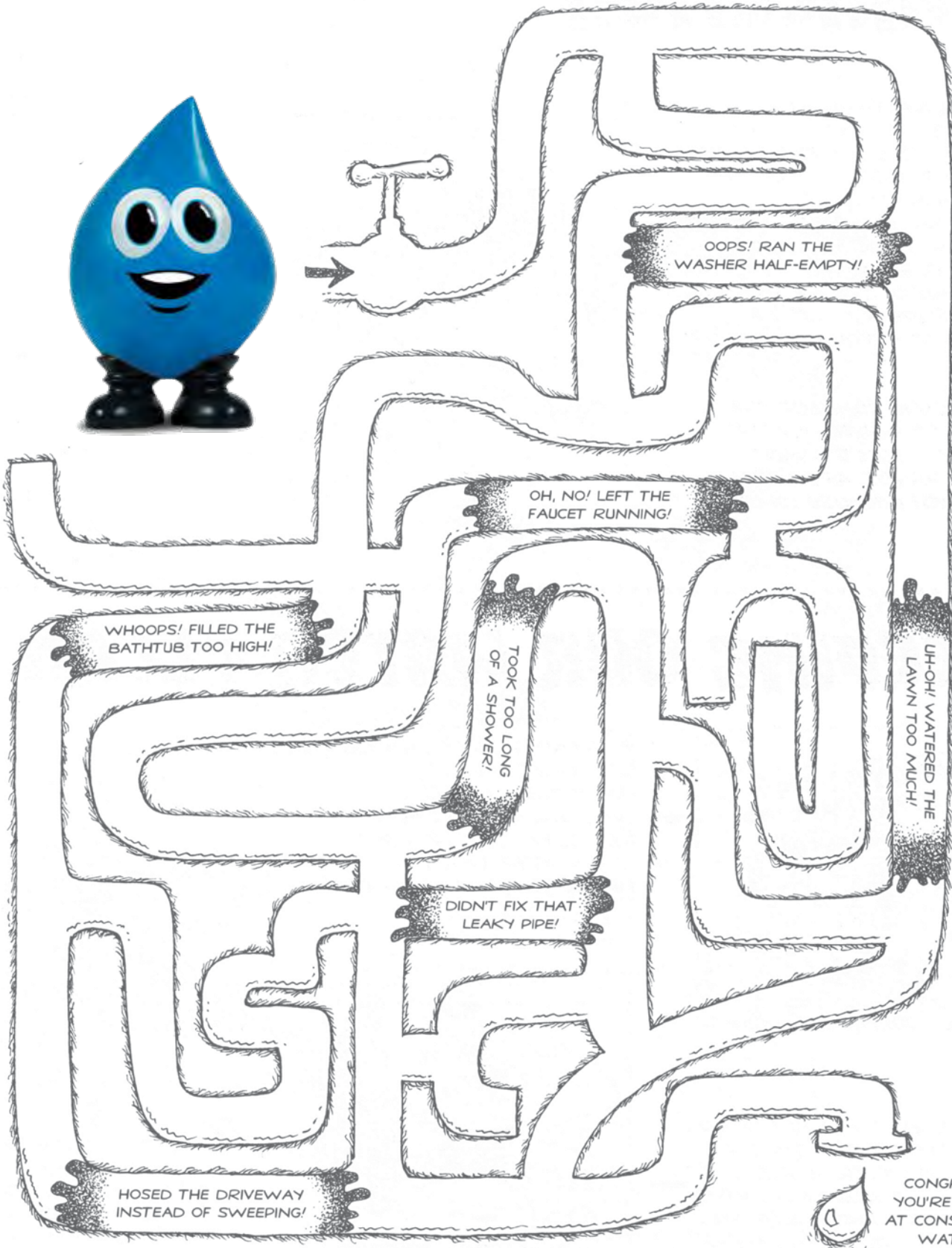
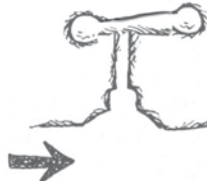


You can tell what conditions a tree grew under by looking at the rings. If the rings are wide, the tree had plenty of water. If the rings are narrow, it was a dry year.

- #1 Years of Drought
- #2 Years of Water/Sun/Growth
- #3 Fire Damage
- #4 Year Tree was "Born"



Follow the Maze To Help Dewey Conserve Water



CONGRATS!
YOU'RE A PRO
AT CONSERVING
WATER!

Sponsored by

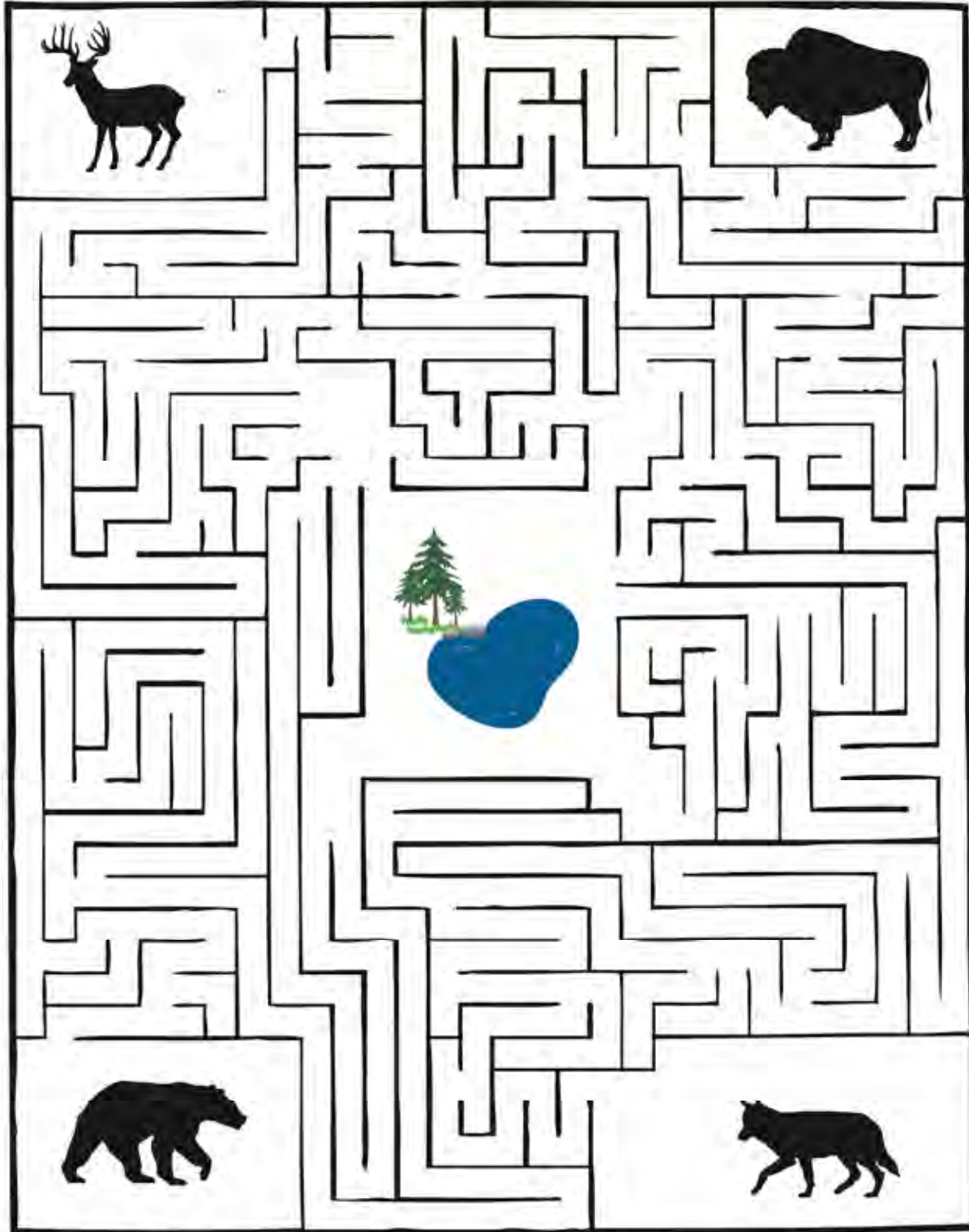


Colorado Springs Utilities

It's how we're all connected

Finding Water

These Colorado animals are looking for water. Just like humans, water is a basic requirement for animals to survive. Can you help these four find the watering hole at the center of the maze?



Wetlands and Fountain Creek



90% of Colorado's wildlife depend upon wetlands while open water covers only 1% of Colorado's total land surface.

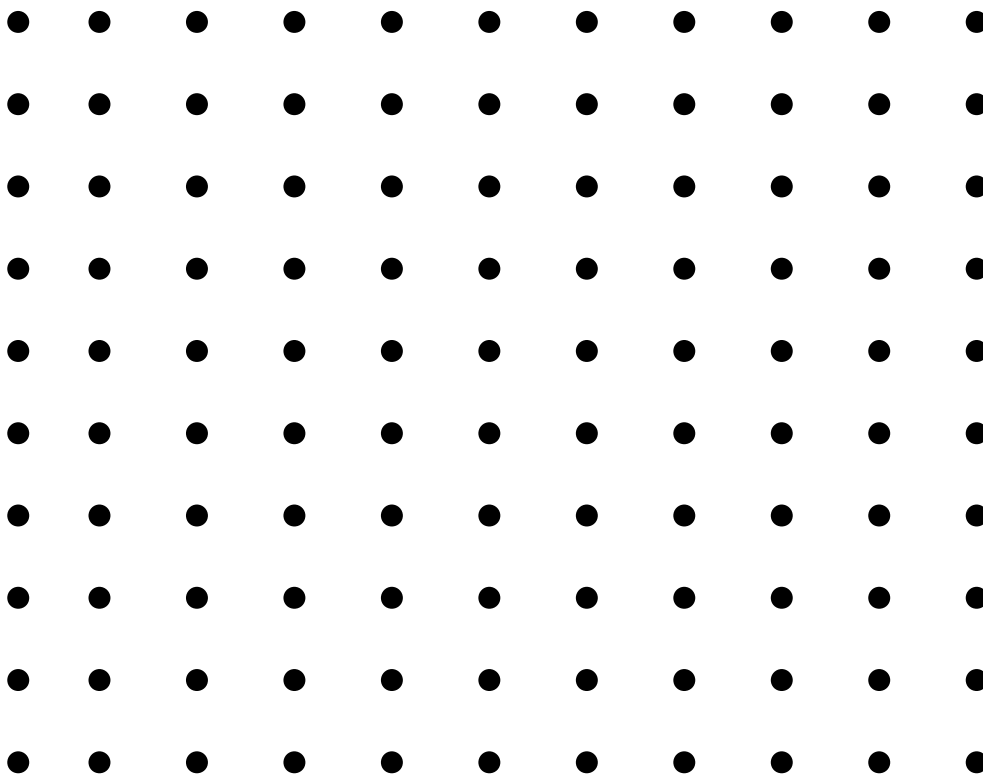
Wetlands are areas where land and freshwater meet and where soils are saturated with water during the growing season.

Fountain Creek Regional Park protects three miles of wetlands around Fountain Creek.

Connect the Dots —

Tell a Friend About Water While You Play This Game

Directions: Take turns adding a horizontal or vertical line between two dots. The player who completes the fourth side of each box earns one point and takes another turn. The winner is the player with the most boxes.



Join us Saturday September 28th for the Creek Week Cleanup at Fountain Creek Nature Center! Learn more at www.fountaincreekweek.com

Sponsored by



Earn a Dewey!

Explore fun water activities with your family! Complete at least one activity and you'll earn a Dewey squeeze ball. Ask for Dewey's Backpack at: Conservation & Environmental Center 2855 Mesa Road Open 8-5, Mon-Fri Call 668-8232 for more information.



ROCKY MOUNTAIN FIELD INSTITUTE

Youth and Family Volunteer Opportunities!



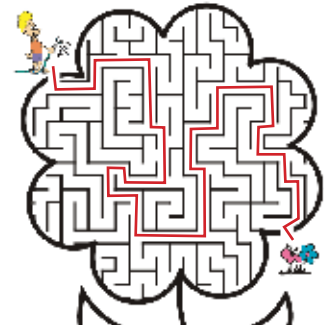
Help with a variety of trail and restoration projects in your favorite park or open space. Learn more at www.rmfi.org!

Answer Key

Page 2



Page 4

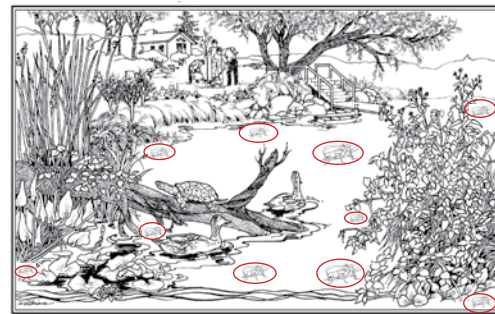


W	T	G	U	F	W	S	I	O	N	S	T
L	A	G	H	T	C	N	R	C	E	F	
M	P	O	R	Z	A	M	A	E	R	T	S
P	E	Z	A	T	C	E	O	A	T	R	N
S	N	A	T	Y	I	L	C	N	E	A	O
D	I	A	E	F	N	J	T	I	A	S	W
X	F	P	H	G	E	A	O	E	H	R	
F	H	U	N	S	H	E	K	R	I	C	
W	R	Q	G	A	I	A	E	T	Z	S	N
I	P	D	S	Q	L	N	G	T	S	I	U
F	I	A	E	S	S	M	O	P	A	A	Q
L	I	Y	A	W	E	V	I	R	D	R	O

Page 6

Drinking water in Colorado Springs comes from three watersheds: the Colorado River, the Arkansas River, and the South Platte River. Snowmelt is collected in the Rocky Mountains and travels more than 100 miles in pipelines to get to town.

Page 9

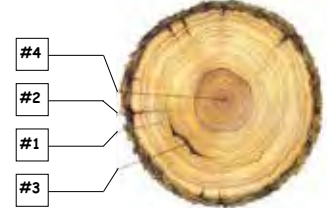


Page 10

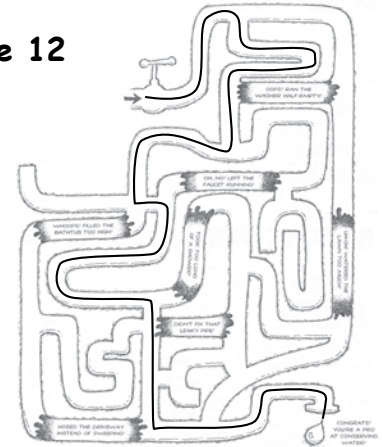
G	T	I	O	M	Z	R	C	A	Z	W	M	S
L	C	H	D	X	O	J	E	E	O	R	M	K
A	M	G	A	P	F	U	W	T	O	I	W	C
C	P	B	R	K	E	O	N	F	A	Y	U	O
I	C	K	O	U	N	A	D	T	Y	W	B	R
E	R	U	L	S	S	N	K	O	A	Z	Z	F
R	G	T	O	I	A	S	N	M	O	I	T	B
A	W	F	C	L	L	E	C	I	S	X	N	G
C	O	L	D	O	V	M	M	Z	R	Y	A	M
I	F	C	W	X	F	M	V	I	K	R	S	E
U	U	F	Z	E	A	O	F	Z	D	K	G	L
M	A	M	M	O	T	H	S	E	T	P	Z	T
H	E	Z	E	E	R	F	N	N	X	N	K	F

Page 11 How old is this tree?

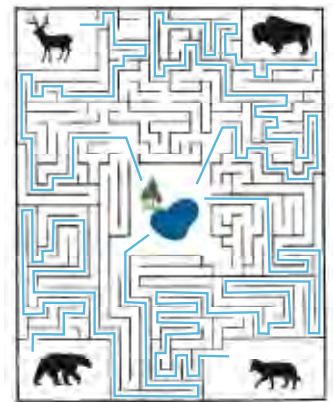
29 years



Page 12



Page 13



Sponsored by Pikes Peak Region Water Partners:

