

COMMUNITY IMPACT REPORT

2019



RMFI
ROCKY MOUNTAIN FIELD INSTITUTE

LETTER FROM THE DIRECTOR

Dear Friends and Supporters of RMFI,

As we reflect back on 2019, one thing is certain - we could not have accomplished all that we did without your generosity, support, and steadfast commitment to RMFI. We sincerely appreciate each and every one of you who collectively make the work that we do possible. Thank you.

The 2019 field season was an historic one at RMFI. We had the largest project docket and staff size in our organization's history, and for the first time ever, completed over 500 individual project workdays. We kicked off new stewardship projects at Shelf Road Recreation Area and Guffey Gorge in partnership with the Bureau of Land Management, new stewardship projects at Mueller State Park in partnership with Colorado Parks and Wildlife, began a multi-year re-route of the Devils Playground Trail to the summit of Pikes Peak in partnership with the U.S. Forest Service and National Forest Foundation, and (finally) finished the new Dixon Trail to the top of Cheyenne Mountain in partnership with the Friends of Cheyenne Mountain State Park and Colorado Parks and Wildlife.

We also worked to continue important trail and restoration projects in half a dozen parks and open spaces in Colorado Springs, critical maintenance efforts on Barr Trail, habitat restoration projects in the Bear Creek Watershed, and important forest health and mitigation projects in the Pike National Forest.

In addition, RMFI's Board of Directors and staff worked hard throughout the year to develop the organization's new strategic plan, which will help guide the organization through 2024. Key strategic goals include securing new long-term office and storage facilities, understanding the role RMFI should play in helping mitigate climate change, and intentional action toward creating a more diverse and inclusive work place. The year also saw an important transition as Liz Nichol, RMFI's Business Manager of 16 years, retired from the organization.

We invite you to read the following pages for an in-depth look at what kept us busy in 2019. At the time of finalizing this report, we are in the midst of dealing with the COVID-19 virus. We are sincerely hopeful that better days are ahead for all. Thank you for your support.

Sincerely,



Jennifer Peterson
RMFI Executive Director

Cover photo by Kellon Spencer Photography



Barr Trail, Photo courtesy of Peter Maksimow.



Guffey Falls, Photo courtesy of Stephen Toledo.



Devil's Playground Trail, Photo courtesy of Ling Li.



Blodgett Peak, Photo courtesy of RMFI.

STEWARDSHIP

RMFI actively engages thousands of community volunteers and youth corps crew members each year in the stewardship of public natural landscapes in Southern Colorado.



EDUCATION

Through experiential education opportunities, RMFI helps foster an ethic of environmental responsibility and trains the next generation of conservation leaders.



Mission:

Rocky Mountain Field Institute promotes the conservation and stewardship of public lands in the Southern Rocky Mountain region through volunteer-based trail and restoration projects, environmental education, and restoration research.

RESEARCH

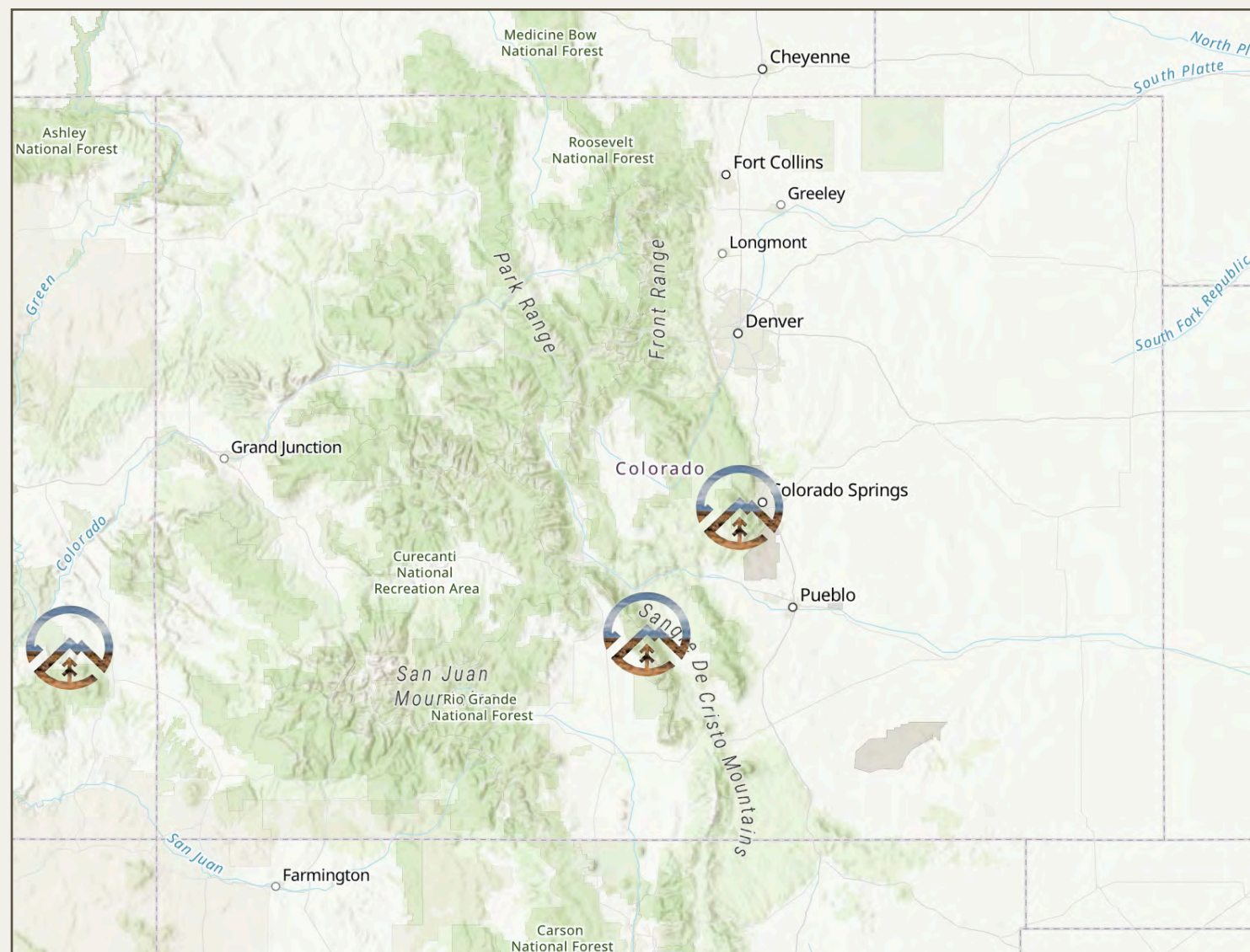
RMFI monitors the effectiveness of restoration and erosion control treatments at many project sites to better understand our impacts on ecosystem health.



2019 PROJECT LOCATIONS

For the past 37 years, RMFI has accomplished its mission by completing a wide variety of important trail and restoration projects in recreational areas throughout the Southern Rocky Mountains and Colorado Plateau. RMFI has received national, state, and local recognition for its stewardship work that is widely regarded as some of the finest work of its kind accomplished in the region.

Our stewardship model centers on community engagement as a means of connecting people to the outdoors, providing sustainable outdoor recreation opportunities, and fostering an ethic of environmental responsibility and stewardship. From recreational trail work to watershed protection and forest mitigation, our work keeps Colorado's great outdoors great.



ALPINE

Kit Carson Peak/Challenger Point
Devils Playground Trail



Kit Carson, Justin Peterson

MONTANE

Bear Creek Watershed
Cheyenne Mountain State Park
Gray Back Peak
Guffey Gorge
Mueller State Park
Rainbow Gulch
Upper Monument Creek
Waldo Canyon



Gray Back Peak, Joe Lavorini

FOOTHILLS

Barr Trail
Blodgett Peak Open Space
Garden of the Gods Park
Palmer Park
North Cheyenne Cañon Park
Pinerias Open Space
Red Rock Canyon Open Space
Shelf Road Recreation Area
Stratton Open Space



Garden of the Gods, Justin Peterson

DESERT

Indian Creek, Utah



Indian Creek, Joe Lavorini



Before and after photos showing construction of a new rock staircase along the Super Crack Trail at Donnelly Canyon in Indian Creek, Utah. This staircase will help facilitate safer and more sustainable access to popular climbing walls in the area.



Before and after photos of trail work in the Garden of the Gods Park along the Strausenback Trail.



Before and after photos showing construction of the Northwest Trail in the Pineries Open Space.



Before and after photos of a new trail reroute constructed on Gray Back Peak in partnership with the U.S. Forest Service.



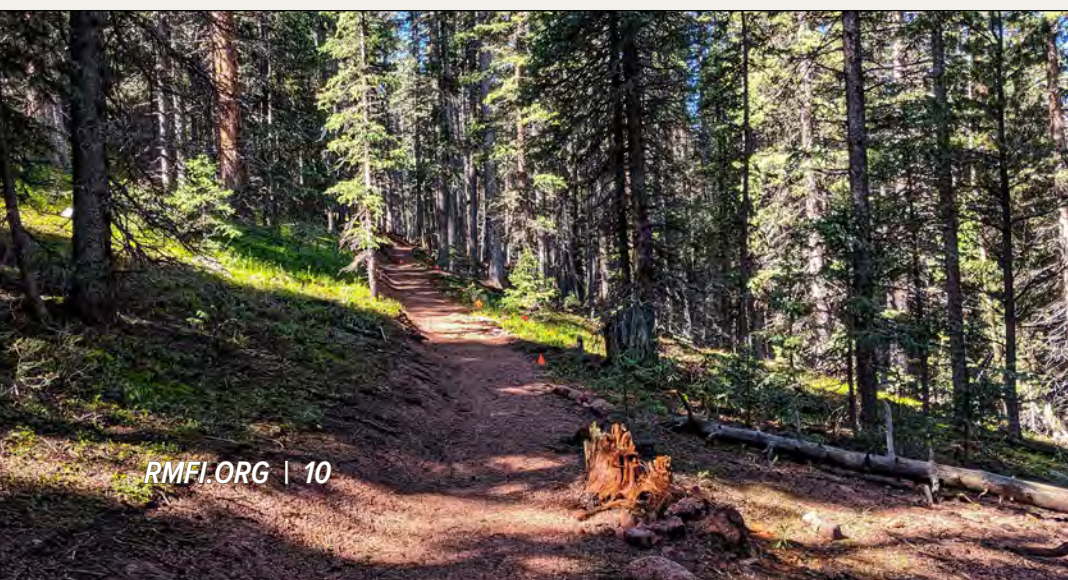
PROJECT HIGHLIGHT

DEVILS PLAYGROUND TRAIL - PIKES PEAK

After years of anticipation, RMFI kicked off the new 4 mile trail re-route project on Devils Playground in partnership with the National Forest Foundation and U.S. Forest Service. The existing trail is aligned with the fall line in many locations and lacks proper stabilization structures in areas where the slope exceeds gradient standards. This has led to incision of up to 4 feet in some areas, both above and below treeline. Because the trail does not drain properly, channelized water flows have scoured soil leading to mass wasting of vegetation and loose rock. The social trail has scoured away around rocks, creating the potential for rock fall over a 1,500-foot segment. The trail has also caused extensive damage to the alpine turf beds. In many places there are large swaths of bare ground where vegetation once grew. The current trail also crosses environmentally fragile areas including populations of sensitive alpine plants (Pikes Peak alpine parsley).

RMFI and other groups have worked for many years to minimize the impacts, however the long-term solution is a re-route of approximately 4 miles that will place the trail in a more sustainable alignment. Once the re-route is complete, the old alignment (approximately 2.44 miles) will be actively restored to avoid further degradation to the alpine.

This multi-year project will continue in 2020 and subsequent field seasons with an anticipated completion date in fall 2021. Be on the lookout for volunteer opportunities during the 2020 field season!



ENVIRONMENTAL EDUCATION

EARTH CORPS FIELD STUDIES COURSE: RMFI's signature field studies course completed its 18th year in 2019. Six students from across the country lived, worked, learned, and played in the Sangre de Cristo Wilderness helping to construct the new summit trail to Kit Carson Peak and Challenger Point.

DIRT CAMP WITH CATAMOUNT INSTITUTE: For the 5th consecutive year, RMFI partnered with Catamount Institute to provide a weeklong educational and stewardship summer camp. "Dirt Camp" is designed to engage 10-12 year olds in a variety of hands-on science and outdoor lessons with a goal to develop ecological stewards through education and adventure.

PIKES PEAK REGIONAL CREW LEADER TRAINING: For the 8th consecutive year, RMFI partnered with the City of Colorado Springs, Friends of the Peak, and the Trails and Open Space Coalition to lead the annual Pikes Peak Regional Crew Leader Training. This program is designed to empower motivated community members with the skills and opportunities to lead safe and effective volunteer projects within our region's parks and open spaces.

FRIENDS OF CHEYENNE CAÑON: RMFI partnered with the Friends of Cheyenne Cañon to lead an education and training program designed to increase the skillset and capacity of their members. Over the course of 6 sessions, RMFI trained members and other participants on basic trail maintenance, and how to construct rock retaining walls and switchbacks.

WILDERNESS FIRST AID TRAINING: RMFI partnered with MEDIC SOLO again in 2019 to bring a Wilderness First Aid course to Colorado Springs. The training was held at the RMFI office and a number of volunteer crew leaders and other outdoor enthusiasts attended the training.

ALPINE STEWARDSHIP TRAINING: RMFI worked collaboratively with other stewardship organizations in Colorado as well as with the U.S. Forest Service and National Forest Foundation (NFF) to co-host an Alpine Stewardship Training as part of NFF's "Find Your Fourteener" campaign. The purpose of the training was to expand capacity within stewardship organizations to accomplish trail and restoration work on Colorado's 14,000 ft. peaks.



Earth Corps students and RMFI staff pose for a group shot en route to a high alpine summit. For 3 weeks, students lived, learned, worked, and played in the Willow Lake Basin helping to reconstruct the summit trail to Kit Carson Peak and Challenger Point.



Participants simulate treatment protocols during the Wilderness First Aid training held at the RMFI office in partnership with MEDIC SOLO.



Dirt Camp participants take an afternoon break after completing one of many critical restoration projects in Garden of the Gods Park. Photo courtesy of Catamount Institute.



The Friends of Cheyenne Cañon and RMFI partnered on a specialized training series to learn how to maintain trails and to construct rock retaining walls and switchbacks. Turns out trail tools make for some good air guitar!

RESEARCH & MONITORING

CITIZEN SCIENCE PROGRAM: RMFI continued its Citizen Science Program in the Garden of the Gods in 2019, and expanded monitoring locations and objectives to include a human dimension component to measure user behavior and compliance when confronted with a closed social trail system. The program provides a sustainable system for monitoring RMFI's land stewardship and restoration activities by engaging adult volunteers and college students in the measurement of ecological parameters at RMFI project sites over time. The program will continue in 2020 with possible expansion to monitoring locations in the Pike National Forest.

JONES PARK OPEN SPACE MONITORING: In 2019, RMFI partnered with El Paso County to begin a monitoring program in the Jones Park Open Space. The primary goals of the monitoring program are to provide a consistent presence within the Open Space through regular site visits, to identify maintenance needs, and to plan and coordinate stewardship projects to address high priority needs. RMFI will continue coordination and monitoring efforts in the Open Space in 2020.

FRONT RANGE PIKA PROJECT: The Front Range Pika Project (FRPP) is a citizen science program that engages the public in conservation research on the American pika. The project was formed to help address the need for additional research and long-term monitoring to determine what factors currently limit the distribution of American pika in the southern Rocky Mountains, and whether the species can persist in the region as climate change accelerates. For the second year in a row, RMFI participated in the FRPP by monitoring for American pika at its high alpine project site located at the base of Kit Carson Peak in the Sangre de Cristo Mountains. For more information, please visit <http://www.pikapartners.org/>.

WILLOW PROPAGATION: Since 2016, RMFI has planted nearly 6,000 mature willows along sections of Bear Creek as well as in riparian areas damaged by the Waldo Canyon Fire in 2012. The goal of the project is to restore these damaged riparian areas so they function properly again to provide habitat, flood mitigation, and streambank stabilization. Each year, RMFI monitors the plantings by assessing mortality rates and taking repeat photographs. To date, extremely low mortality rates (<1%) have been observed as compared to mortality rates resulting from traditional willow staking methods, which exceeded 50% in many cases. RMFI will continue monitoring transplanted willows and will also be pursuing additional willow planting projects to continue the propagation program.



A citizen scientist observes user patterns and behavior in Garden of the Gods. One objective of this year's monitoring protocol was to evaluate human behavior and compliance when confronted by a trail closure sign or fence.



Citizen scientists utilize a quadrat to measure percent bare ground in the Garden of the Gods Park.



A photograph of an American pika. Pikas are sensitive to climate and are disappearing from some areas in a pattern that suggests they are succumbing to recent climate change. Photo courtesy of the USGS.



RMFI and U.S. Forest Service staff monitor willow mortality in the upper Camp Creek drainage of the Waldo Canyon burn scar. RMFI planted several thousand willows in this drainage over the last several years.



835 Youth ages 8-24



383 Rock/timber steps built



3.7 Miles of social trail closed/restored



21 Total project sites

132 Youth conservation corps members



92 Community and school groups



1,023 Erosion control structures built/maintained



ON-THE-GROUND IMPACT



2019 TOTALS:

504
TOTAL WORKDAYS

2,032
TOTAL VOLUNTEERS

12,927
VOLUNTEER HOURS

\$362,208
VOLUNTEER VALUE

9.5 Miles of trail built/maintained



196

Pounds of native seed

1,720

Native transplants used in restoration

2,313

Trees felled for forest health

THE RMFI "HERD"

STAFF



Name: Jennifer Peterson
Title: Executive Director



Name: Joe Lavorini
Title: Program Director



Name: Jay Minton
Title: Program Manager



Name: Alex Hladkyj
Title: Program Manager



Name: Molly Mazel
Title: Volunteer & Partnership Coordinator



Name: Liz Nichol
Title: Business Manager



Name: Bronwyn Woodward
Title: Business Manager



Name: Jarrod Gaut
Title: Field Coordinator



Name: Jamie Goins
Title: Field Coordinator



Name: Jacob Twersky
Title: Field Coordinator



Name: Mary Aland
Title: High Alpine Field Instructor



Name: Deborah Ayers
Title: Field Instructor



Name: William Brown
Title: Field Instructor



Name: Bryson Camp
Title: Field Instructor



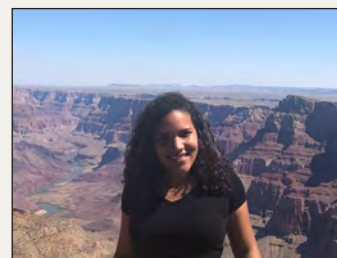
Name: Josh Cohn
Title: Field Instructor



Name: Dianaliz Cruz-Rodriguez
Title: Field Instructor



Name: Porter England
Title: High Alpine Field Instructor



Name: Lucy Ann Flores-Gonzales
Title: Field Instructor



Name: James Hawkins
Title: Field Instructor



Name: Marc Martinez
Title: Field Instructor



Name: Elise Moeller
Title: Field Instructor



Name: Hunter Shuman
Title: Field Instructor



Name: Lindsay Williams
Title: Field Instructor

OFFICE VOLUNTEERS

Lori Lilly
Jon Fisher
Darcy Mazel
Sigrid Meadows
Jesse Rochette

INTERNS & FELLOWS

Rainy Adkins
Dylan Anderson
Bryson Camp

Jasmine Linder (Fellow)
Madeleine Tucker

BOARD OF DIRECTORS

Lee Derr, President
Jeff Mohrmann, Vice President
Jim Smith, Treasurer
Hillary Hinton, Secretary
Jason Alwine, Member
Chris Lieber, Member
Mike Smith, Member
Lily Weissgold, Member
Melissa McCormick, Member



RMFI Board of Directors. Front row (seated) from left to right: Mike Smith, Lee Derr. Back row (standing) from left to right: Melissa McCormick, Chris Lieber, Jeff Mohrmann, Jason Alwine, Lily Weissgold. Not pictured: Jim Smith.

RMFI FALL SHINDIG

Each year, the Garden of the Gods Visitor and Nature Center hosts RMFI's annual Fall ShinDIG, which recognizes RMFI's many volunteers, funders, supporters, and other folks who make our work possible.

FALL SHINDIG SPONSORS:

Garden of the Gods Foundation
Garden of the Gods Visitor and Nature Center
Ian and Carrie Kalmanowitz
Jeffrey Hovermale
The Mitguards

Mountain Chalet
Picnic Basket Catering
Pocket Pals Trail Maps
Raymond James
Rick and Cheryl Walker

AWARD WINNERS:

Robert Weggel Funder of the Year: Mountain Chalet
Mark Hesse Stewardship Partner of the Year: University of Colorado at Colorado Springs (UCCS)
Land Management Partner of the Year: U.S. Forest Service - Pikes Peak Ranger District
Volunteer Group of the Year: Zebulon Pike Youth Services Center
Volunteer of the Year: Dallas Moses
Mountain Chalet Crew Leader of the Year: Tom Mowle

NATURE! PHOTO CONTEST FINALISTS:

Restoration: Dean Waits, Austin Halpern
Mountains: Austin Halpern, Robert Hoff
Flora: Rikki Held, Wesley Trimble
Fauna: Sheri Kerley, Daniel Gaura
Interaction: Austin Halpern, Roo Smith
Youth: Caitlin Erhard, Ethan Hedden
Staff Pick: Wendy Gedack
Grand Prize Winner: Robert Hoff



Wendy Gedack, Staff Pick, RMFI NATURE! Photo Contest.



Joe Lavorini, RMFI Program Director, presenting an award at the RMFI annual Fall ShinDIG.

ROCK STAR VOLUNTEERS

RMFI's volunteers are the lifeblood of the organization. Rock Star Volunteers represent those who have volunteered with RMFI 5 or more days throughout the year, and are listed below. Thank you, rock stars!

- | | |
|----------------------------|------------------------|
| 1. Rainy Adkins | 20. Joseph Lococo |
| 2. Dylan Anderson | 21. Joel Marx |
| 3. Leslie Andros | 22. Darcy Mazel |
| 4. Carol Beckman | 23. Devin McCauley |
| 5. Larry Bogue | 24. Lacey Meek |
| 6. Susan Campbell | 25. Dallas Moses |
| 7. Quinn Collins | 26. Anan Patel |
| 8. Joey Crochet | 27. Caroline Ratterree |
| 9. Dianaliz Cruz-Rodriguez | 28. Chris Schwing |
| 10. Riley de Ryk | 29. Mike Scott |
| 11. Matt Deyoe | 30. Jeff Shapiro |
| 12. Daniel Downs | 31. Clara Stein |
| 13. Denise Downs | 32. Patricia Stewart |
| 14. Jeff Erhard | 33. Jared Stoffel |
| 15. Jonathan Fisher | 34. Mary Tanner |
| 16. Susan Gartung | 35. Stephen Toledo |
| 17. Lori Lilly | 36. Madeleine Tucker |
| 18. Jasmine Linder | 37. Morgan Vlasse |
| 19. Isaiah Litzell | |



Dallas Moses, RMFI Volunteer of the Year, helping out on a trail project at Blodgett Peak Open Space.

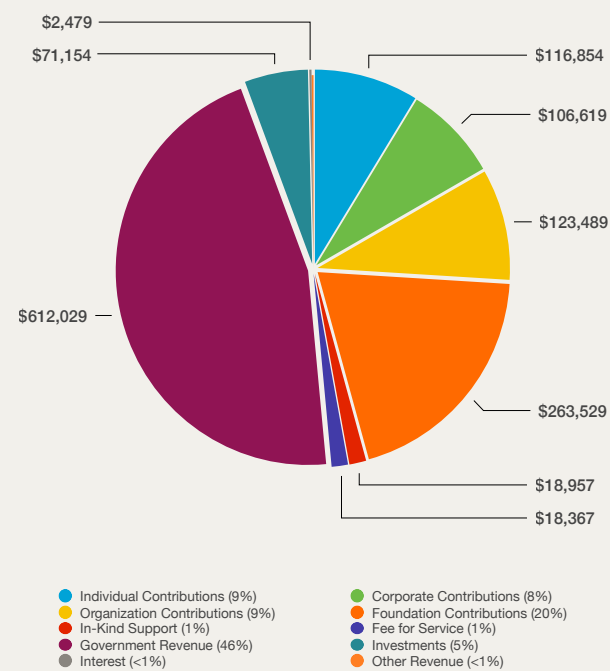
A tremendous number of generous folks sponsored the 11th Annual RMFI Fall ShinDIG for which we are very appreciative!



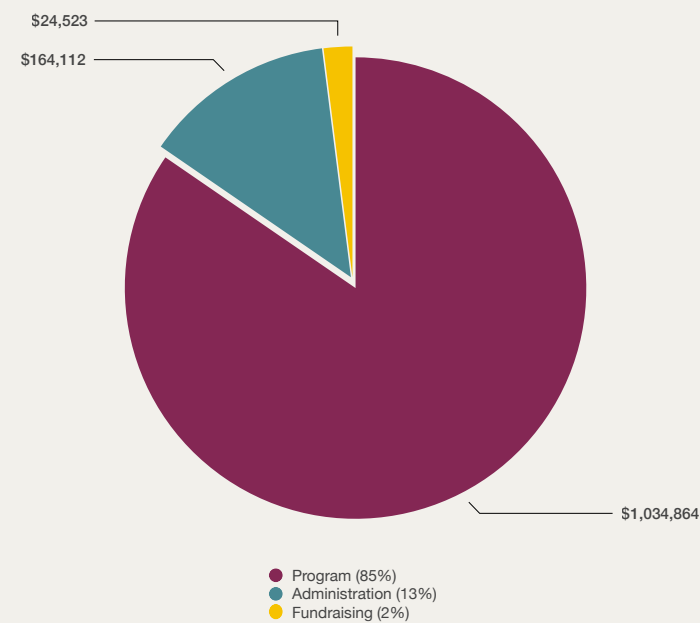
FINANCIAL OVERVIEW

For the third year in a row, RMFI surpassed \$1 million in revenue. This is a strong indicator that RMFI's services and programs continue to be in high demand. In addition to investing in short-term organizational needs, RMFI continued its diversification into long-term investment strategies to ensure a strong financial position well into the future.

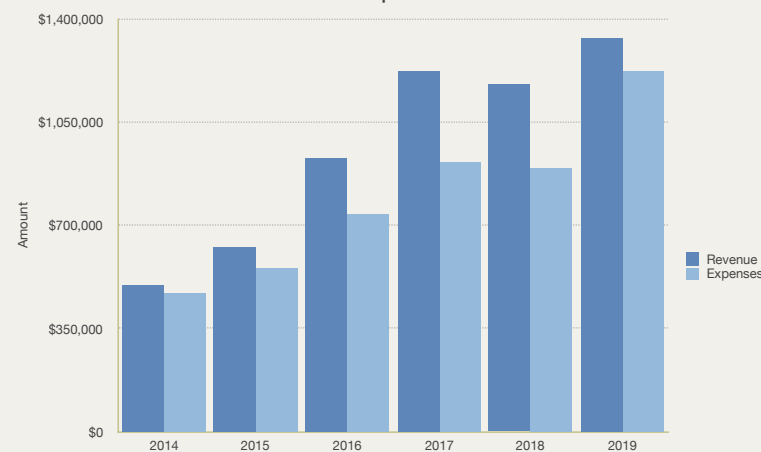
Revenue



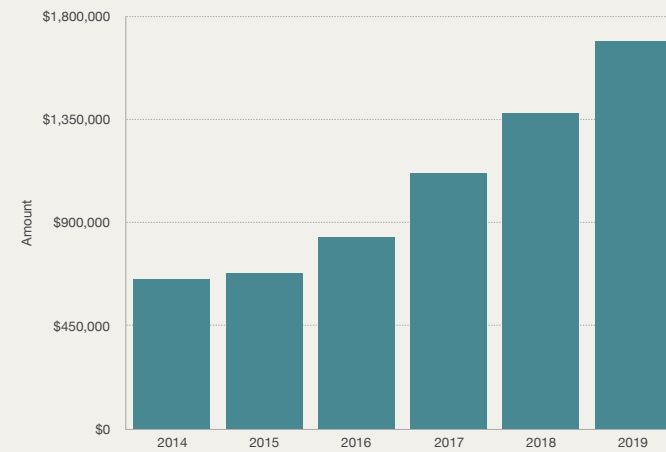
Expenses



Revenue and Expenses: 2014-2019



Total Liabilities and Net Assets: 2014-2019



Finalist in the "Restoration" category of RMFI's annual NATURE! Photo Contest. Photographer: Austin Halpern.

THE ROBERT J. WEGGEL FUND

Robert "Bob" Weggel has long been an avid hiker and backpacker, having trekked two hundred miles to gaze enraptured by Mt. Everest and its vicinity and summited Mt. Whitney and all but nine of Colorado's 14ers—the first in 1970, the most recent at age 73. He's also an avid conservationist and trail builder, specializing in rock steps, stepping stones and soil-retention walls. RMFI's Volunteer Vacation program hosted him in 2006 at South Colony Lakes and subsequently at Lake Como, Kit Carson, and Cheyenne Mountain. In gratitude, in March of 2017 he established RMFI's first Endowment Fund to help support its conservation and stewardship work.

Bob earned a B.S. degree in physics from MIT, followed by graduate work at Harvard. For thirty-six years he designed magnets for the National Magnet Laboratory at MIT; 1980s editions of The Guinness Book of World Records cite him as co-designer of a magnet that generated the most intense continuous magnetic field in the world. He now is contributing to expeditiously bringing to our energy-hungry world abundant, economical, environmentally-benign electric power from thermonuclear fusion.

The Robert J. Weggel Fund for the Rocky Mountain Field Institute will help ensure the organization's long-term financial viability and sustainability. If you'd like to learn more about the Fund and how you can contribute to it, please contact RMFI's Executive Director, Jennifer Peterson, at 719-471-7736, ext. 1# or jennifer@rmfi.org.



GRANTORS, CONTRIBUTORS & SPONSORS

We’ve made every effort to ensure all of our donors are acknowledged in this report. Please let us know if we’ve made an error. We appreciate your support and understanding.

GOVERNMENT

Bureau of Land Management
City of Colorado Springs
City of Manitou Springs
Colorado Water Conservation Board
Colorado Parks & Wildlife
El Paso County Parks
U.S. Forest Service

ORGANIZATIONS

After Hours Garden Club
American Hiking Society
Benevity
Broadmoor Garden Club
Colorado College
Colorado Fourteeners Initiative
Combined Federal Campaign
Friends of Cheyenne Cañon
Friends of Cheyenne Mountain State Park
Friends of Garden of the Gods
Friends of Red Rock Canyon
Friends of the Peak
Great Outdoors Colorado
Incline Friends

IndyGive
Montrose High School
Pikes Peak Marathon, Inc.
Pikes Peak Workforce Center
RMFI Board of Directors
Texas Tech University
The Access Fund
The Mitguards
Tim Davis Art Images
Trails and Open Space Coalition

FOUNDATIONS

Amazon Smile Foundation
Bill & Melinda Gates Foundation
Bloom Foundation
CCS Charitable Foundation Inc.
Clif Bar Family Foundation
Community First Foundation
El Pomar Foundation
Garden of the Gods Foundation
Gates Family Foundation
George S. and Dolores Dore Eccles Foundation
Lyda Hill Philanthropies
Kirkpatrick Family Fund

Louise Arnold Maddux Foundation
National Fish and Wildlife Foundation
National Forest Foundation
Pikes Peak Community Foundation
T. Rowe Price Foundation
Union Pacific Foundation

BUSINESSES

Academy Riding Stables
Accolade Fitness
American Adventure Expeditions
AVA Rafting & Zipline
Bilstein Shock Absorbers
Black Diamond
BLDG Active
Blue Bell Creameries
Bristol Brewing Company
Browns Canyon Rafting
CityROCK Climbing Center
Colorado Springs Fine Arts Center
Columbia Sportswear Company
ConocoPhillips
Crossroads Animal Hospital
FedEx
Front Range Barbeque



Finalist in the “Fauna” category of RMFI’s annual NATURE! Photo Contest. Photographer: Sheri Kerley.

Front Range Climbing Company
Garden of the Gods Trading Post
Garden of the Gods Visitor and Nature Center
GE Johnson Construction Company
Gearonimo Sports
Glenwood Caverns Adventure Park
King Soopers
Kirkpatrick Bank
Kissing Camels Family Dentistry
Lexis Nexis
Lost Friends Brewing
Manitou Auto Service
Mike’s Camera
Morgan Stanley
Mountain Chalet
Mountain Equipment Recyclers
New Belgium Brewing Company
Old Town Bike Shop
Organic Climbing
Osprey Packs, Inc.
Patagonia
Pocket Pals Trail Maps and Outdoors
Pure Bouldering
Raymond James and Associates, Inc.
REI, Inc.
Rite in the Rain
Rocky Mountain Restaurant Group
Royal Gorge Rafting
RTA Architects
Stables at the Broadmoor
Stargazer’s Theatre and Event Center
Static Climbing
Subaru of America, Inc

Target
Thai Basil
Trails End Taproom
Urban Steam
Veda Salon & Spa
Western Digital Corporation
Western Museum of Mining and Industry

INDIVIDUALS

Anonymous
Christopher Aaby
Douglas Abernethy
David Adair
Angie Adams
Michael Adrian
Carol Albert
Zach Albert
William Allen
Daniel Allen
Donnell Allen
Gayle Allen
Jason Alwine
Naomi Amsler
Michael Anderson
Dylan Anderson
Margie Arnold
Amanda Baida
Alice Baker-Reinholtz
P Balph
Renee Barall
Matt Barton
Susie Barton-Stetson
Groucho Beckenhaupt

Donna Becker
Carol Beckman
Matthew Bell
Penny Bergsten
Jolene Berlin
José Bermudez
Owen Beute
Penny Bever
Lynn Bevington
Liz Bevington
Jeff Bieri
Kip Biese
Tim Black
Janice Black
Larry Bogue
Jan Booker
Kent Borges
Marilyn & Don Bosenbecker
Paul & Naomi Bowman
Aaron Boyles
Martina & Chris Breeden
Steve Bremner
Anthony Bricker
Alan Bridges
Mike & Tanja Britton
Howard & Dale Brooks
Tim Brown
Kristin Brown
Keith Brown
Laura Brown
Eric Brown
Rich Broyles
Teri Buchanan
Eric Bufkin

Grant Prize winner of RMFI’s annual NATURE! Photo Contest. Photographer: Robert Hoff.



Sandra Buhler
Roland Buhler
Sandra Buhler
Ann Burek
Jack Busher
Alison Butler
Gary & Krista Butterworth
Daniel Byrd
Christine Carlton
Ren Carroll
Linda Carter
John Cavanaugh
Jennifer Cawley
Jacob Christensen
Michael & Julie Christopher
Joy Cipoletti
Matthew Clark
Josh Cohn
Elliot Cohn
Alice Cole
Quinn Collins
Barb & Mark Colvin
Christine Conboy
Chris Condie
Suzy Connaughton
Louise Conner
David Conway
Kathleen Cook
Summer Coombs
Jeff Cooper
Barry & Pat Cooper
Stuart Coppedge
Eric Corwin
Teresa Cotten
John Crandall
Chris Daugherty

Jim Davies
Susan Davies
Tim Davis
Alessandra Decker
Merrick Decker
Alessandra Decker
Patty Deeds-Starr
Paul DeJong
Georgette DeJong Chekiri
John & Jan Demmon
Paul Derbique
Lee Derr
Carolyn Derr
Courtney & Paul Deuser
Rose DiCenso
Stephanie DiCenzo
Monica Dobbin
Sharie Dodge
Clarissa Dominguez
Jennifer & Scott Dorff
Bill & Cynthia Doty
Lynne Downs
Barb Dowski
David Drake
Steve & Janie Driska
L Ducett
Sunny Dugas
Roland & Amelie Dugas
Cynthia Dunn
Kathy Eans
Greg Earhart
Michael East
Jenine Ebersohl
James Ebersole
Steve & Monika Eckmann
Lynda Ekberg

Caitlin & Jeff Erhard
Laura Eurich
Bob Falcone
Denise & Norman Farrar
Danu Fatt
Max Ferguson
Dominic Ferrara
Ben & Karol Finch
Shawn Finley
Megan Fitzgerald-McGowan
Denise Flory
Stephen Flynn
Brandy Fogarty
Nancy Fortuin
Leann Fraka
Andrew France
Evan Francis
Dani Francis
Nancy Fraser
Susan Frazee
Heather Frisinger
Margaret & Aaron Gaddis
Jill & Matt Gaebler
Clifford Gardner
Amanda Garrison
Joy Garscadden
Susan Garsoe
Susan Gartung
Daniel Gaura
Wendy & Troy Gedack
Edward Gemin
Jay George
Joel Gibaon
Connie Gibbons
Torie Giffin
Greg Glatzmaier

Lauren Graham
Tony Greaton
Anthony Greaton
Kim & Roger Greer
Lee Gregoire
Dave & Lisa Guhl
Pascale Gulick
Jean Gumper
Tim Haas
Melissa Hafter
Judy Hagge
Liz Hallman
Scott & Corrina Hamann
Curtis Hansen
Thomas Harris
Karen Hartley
Nicole & Bradley Hartmann
John Hartung
Andrea Hassler
Tom & Corrine Hauter
David Havlick
John & Pamela Hawk
Ethan Hedden
Jonas Hedlind
Sharon Hemmer
Connie Hemmer
Edwin Henderson
Nancy Henjum
Aaron & Carolyn Henson
Karel Hernandez Bandrich
Janet Hildebrant
Mark Hinchman
Alex Hladkyj
James Hlavaty

Bree & Josh Hobgood
Robert Hoff
Brenda Holmes-Stanciu
Bill & Janice Hornbostel
Hope Hosack
Leslie Hough
Marion Hourdequin
Jeffrey Hovermale
Jeremy Howard
Carole & Tom Huber
Thomas Huber
Mandy Hughes
Bruce Hutchison
Richard Idler
Ron Ilgen
Mark Jakusovszky
Jennifer James
Winn & Rebecca Jewett
Greg Johnson
Bob & Connie Johnson
Ellen & Barry Johnson-Fay
Sam Jones
Vicki Kallhoff
Ian & Carrie Kalmanowitz
Dan Kay
Thomas Keating
Michael Kenny
Sheri Kerley
Vicky Kipp
Tim & Andrea Kippel
Diane Kirton
Lisa Klages
Deb Komitor
Jeanne Koss

Tim Kranz
Mary Laird
Carolyn Lang
Andrew Latrell
Kay Marie Lavorini
Amy & Tom Lavorini
Charles & Joan Lawson
Darlene LeBlanc
George Lee
Becky & David Leinweber
Michael Lenselink
Ben Lewis
Chris Lieber
Lori & Jon Lilly
Gordon Limb
Toby Littau
Isaiah Litzell
Kevin Lloyd
James Lockhart
Carol Logan
Susan Lomenick
Carol Lubell
Rob Lucas
Joanne & Robert Lucey
Wendy Mack
Annie MacMillan
Rebecca MacNamee
Janice Maloney
Valerie Maltese
Becky Mares
Pit Martin
Douglas Martin
Jan Martin
Joel Marx

Finalist in the “Fauna” category of RMFI’s annual NATURE! Photo Contest. Photographer: Daniel Guara.

Finalist in the “Interaction” category of RMFI’s annual NATURE! Photo Contest. Photographer: Austin Halpern.

Megan Mater
Edward Maynard
Darcy Mazel
Mike Mazzola
Melissa McCormick
Linnea McDonald
Justin McDonald
Sigrid Meadows
Ruth Meinking
Chad Meister
Rachel Merling
Erica & Jason Meyer
Robert Miller
Michael & Roberta Miller
Ana Miller-ter Kuile
Deb & Chris Mitguard
Richard & Cris Mock
Elise Moeller
Felicia Mohr
Jeff Mohrmann
Marcy Morrison
Shane Morrison
Kathleen Morrow
Byron Morton
Thomas Mowle
Doug Moyes
Jean Muller
Leonard Myers
Corinne Nelson
Karl Nelson
Shane Nelson
Silvana Nelson
Erik Newhouse
Liz Nichol
Lori Nicholson
Curtis Nimz

Dana Nordstrom
Beth Norton
Matt Nunez
Cathryn O'Donnell
Janet Oliver
Margaret Olivieri-Barton
Lynne Olivieri-Barton
Toni Olivieri-Barton
Jan & Dan Ostrom
John & Lynne Otto
Eric Owen
Karen Palus
Donna Park
Bill Patterson
Nolan Patterson
Robert Patterson
Mary Payne
Lauren Penner
Kirk Pennock
Carlos & Gretchen Perez
Gretchen Perez
Harlow Perrigo
Jennifer Peterson
Justin Peterson
Bill & Dorothy Peterson
Steve Phillips
Carol Lynn Pina
Arthur Porter
Mike Procell
Jan Prowell
Jacquelyn Puett
Julie Raber
William Randall
Zita Reda
David & Linda Reinberger
Carrie Renaud

Emily Reynolds
Judith Rice-Jones
Riley Riggs
Michael Rigney
David Riotte
Jaclyn Robertson
Mary & Pete Rodas
Kyle Rodman
Cregor Rodriguez
Ellen Rome
Martha Rosenau
Carly Rosenberg
Aaron Rosenthal
Russell Ross
Sarah Roueche
Tim Royston
Renee Rudolph
Bill Ruskin
Julie Ryan
Andrea Rynne
Deborah Sagen
Henry Scarangella
Ann Schmechel
Melanie Schnathorst
Alli Schuch
Richard Schultenover
Catherine Schulz
Andrea Schweikert
Mike & Valorie Scott
Carol Scott
Robert Seel
Judy Sellers
David Septimus
Deborah Sheinman
John Shuman
Carrie Simison

Sarah Simon
Cheryl Sims
Heidi Sinclair
Manpreet Singh
Kristin Skoog
Eric & Andrea Sleeper
Julie Slivka
Gurney Sloan
Jennifer Slye
Terrence Smith
Mike Smith
Jim Smith
Diana Smith
Grant Smith
Jean Smith
Kim Snowdon
Cherie Snyder
Marc Snyder
Erica Socorro
Gary Sondermann
Julie Sprinkle
Joe & Mimi Spruiell
Adrian Stanciu
Dick Standaert
John Stansfield
Kathryn Stark
Daniel Starr
Patricia Stewart
Rostyslava Stoecker
Madi Stuart
Jennifer Sundman
Julie Sussman
Cory & Andrea Sutela
David Sweetman

Claire Swinford
Janet Tanner
Leland Tatum
Julie & Mike Taylor
Valerie Terrill
Michael Teter
Mark Thieme
Mark Thieme
Jeremy & Marcie Thompson
Michael Toland
Stephen Toledo
Shanti & Coreen Toll
Varanrat Torok
Wesley Trimble
Sarah Troemel
Danna Tullis
Eric Turner
Graham Ucchino
Sara Vaas
James Van Hoy
Barb Van Hoy
Stan VanderWerf
Charles Vanlandingham
Mike Vann
John Vasilakis
Brian Vitulli
Morgan Vlasse
Rich Vogel
Laurie Voss
Robert Wagstaff
Dean & Kathy Waits
Melissa Walker
John Walker
Noreen Walker

Jack Wallick
John Walsh
Jimmy & Sarah Walter
Brett Warning
Chris Warning
Sherlene Waters
David Watson
Joshua Waymire
Linda Webber
Kevin Weese
Robert Weggel
Stanley Weimer
John Weiss
Lily Weissgold
Erin Welch
P.J. Wenham
Dick Wenham
Richard Wenham
Juli Williams
Karrie Williams
Cathryn Wilson O'Donnell
Geri Woessner
Martin Wolf
Brian Wonciar
Steve & Laurie Wood
Daniel & Nancy Woods
Bronwyn Woodward
Amber Woodward
Tyler Woodward
Harry Wrede
Julia Wright
Hansjoerg Wyss
Tim Yeomans
Ann Young

Finalist in the “Interaction” category of RMFI’s annual NATURE! Photo Contest. Photographer: Roo Smith.

Finalist in the “Youth” category of RMFI’s annual NATURE! Photo Contest. Photographer: Caitlin Erhard.



James Young
Rebecca Young Williams

VOLUNTEER GROUPS AND SCHOOLS

Aspen Valley High School
Atlas Prep School
BKD CPAs & Advisors
Booz Allen Hamilton
Boy Scouts of Colorado
Catamount Institute Dirt Camp
Catamount Institute YES Club
Challenger Middle School
City Serve
CIVA Charter High School
Colorado College
Colorado Community Action
Association
Colorado Mountain Club - Pikes Peak
Group
Colorado Springs Early Colleges
Colorado Springs School 8th Grade
CorePower Yoga
DAS42
Deerfield Hills Community Center
Doherty High School
Eagleview Middle School 8th Grade
Science Club
Elder Construction
Encore Electric
Erickson, Brown & Kloster
Evangelical Christian Academy

eviCore
FedEx
Fountain Valley High School
Friends of Cheyenne Cañon
Girl Scouts of CO
Girl Scouts of CO Troop 3592 and 4457
Girls Scouts (California)
Global Village Academy
Griffis Blessing
Griffith Centers for Children
Harrison District 2 Elevated
HDR, Inc.
Hillside Community Center
Kissing Camels Family Dentistry
Manitou Springs Elementary School
Manitou Springs Middle School
Memorial Hospital Occupational
Therapists
Montrose High School
Nunn Construction
Peak Education
Pikes Peak Climbers Alliance
Rampart High School Emerging
Leaders
Schriever Air Force Base
Springs Equality
Sylvan Meadows HOA
T. Rowe Price
Texas Tech University
The Classical Academy
The Mission Continues

The Peak School
U.S. Air Force Academy
University of Colorado Colorado
Springs
Veda Salon & Spa
Western Digital
Zebulon Pike Youth Services

**THANK YOU TO OUR 2,032
VOLUNTEERS!**



Kit Carson as seen from the top of the waterfall high above Willow Lake in the Sangre de Cristo Wilderness.

LIZ NICHOL RETIRES

After 16 years with RMFI, Liz Nichol, beloved office manager, retired on May 1, 2019. It's hard to put into words the many contributions Liz made over her tenure at the organization - suffice it to say the organization wouldn't be what it is or where it is today without her dedication, passion, and commitment. She was first hired on by RMFI's founder, Mark Hesse, when the organization was based out of Mark's garage and only had a few employees. At the time of her retirement, RMFI had grown to employ more than 20 people with a budget of over \$1 million, all of which Liz kept track of through essential accounting and bookkeeping duties, among many other roles. We wish her nothing but the best in her well-earned retirement. Thanks, Liz!



A trail whisker denotes the new alignment of the Devils Playground Trail re-route to the top of Pikes Peak.





RMEI
ROCKY MOUNTAIN FIELD INSTITUTE

MAIN OFFICE

815 South 25th Street
Suite 101
Colorado Springs, CO 80904
(719) 471-7736

www.rmfi.org



**ACCREDITED
CHARITY**